



المملكة  
THE KINGDOM

BLOCK DEPARTMENT  
PRODUCTS



المملكة  
THE KINGDOM

# SECTIONS

---

- A. PAVING PRODUCTS
- B. MASONRY CONCRETE BLOCKS
- C. WHEEL STOPPER & KERBSTONE
- D. AERATED AUTOCLAVED BLOCKS



المملكة  
THE KINGDOM

# PAVING COLORS



- BROWN
- OFF WHITE
- BUFF
- BLACK
- RED



- GREEN
- YELLOW
- ORANGE
- GREY



المملكة  
THE KINGDOM

## A. PAVING PRODUCTS



### RECTANGULAR PAVING

SIZE: 200X100 MM  
THICKNESS : 60 & 80 MM

Color



### EUROPEAN FAN

SIZE: -  
THICKNESS : 60 MM

Color



### EUROPEAN FAN

SIZE: -  
THICKNESS : 80 MM

Color



### SQUARE PAVING

SIZE: 200X200 MM  
THICKNESS : 60 & 80 MM

Color



### SQUARE PAVING

SIZE: 100X100 MM  
THICKNESS : 60 & 80 MM

Color



### RETRO PAVING

SIZE: 250X60 MM  
THICKNESS : 60 MM

Color



### DIAMOND PAVING

SIZE: -  
THICKNESS : 80 MM

Color



### RECTANGULAR PAVING

SIZE: 200&150&100 X 600 MM  
THICKNESS : 110 MM

Color



المملكة  
THE KINGDOM

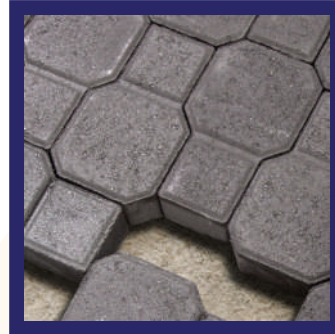
## A. PAVING PRODUCTS



**3D PAVING**

SIZE: -  
THICKNESS : 60 MM

Color



**KEY PAVING**

SIZE: -  
THICKNESS : 60 MM

Color



**CASA BLANCA PAVING**

SIZE: 272X190 MM  
THICKNESS : 60 MM

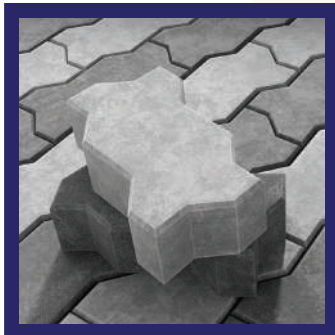
Color



**DIAMOND PAVING**

SIZE: 210X182 MM  
THICKNESS : 60 MM

Color



**ZIGZAG PAVING**

SIZE: -  
THICKNESS : 60 & 80 MM

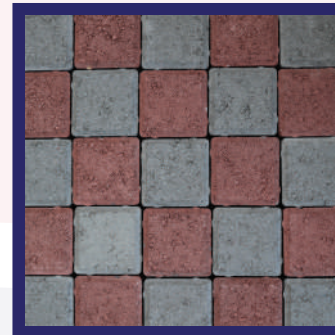
Color



**OCTAGON PAVING**

SIZE: 198X82 MM  
THICKNESS : 60 MM

Color



**SQUARE PAVING**

SIZE: 80X80 MM  
THICKNESS : 60 & 80 MM

Color



**Rectangular paving**

SIZE: 150X450 MM  
THICKNESS : 50 MM

Color



المملكة  
THE KINGDOM

## B. MASONRY CONCRETE BLOCKS



**(HCB) 4 INCH MOH**

**SIZE:** 90X190 MM  
**THICKNESS :** 390 MM



**(HCB) 4 INCH**

**SIZE:** 100X200 MM  
**THICKNESS :** 400 MM



**4 INCH SOLID**

**SIZE:** 100X200 MM  
**THICKNESS :** 400 MM



**(HCB) 4 INCH LONG**

**SIZE:** 100X200 MM  
**THICKNESS :** 600 MM



**(HCB) 6 INCH MOH**

**SIZE:** 140X190 MM  
**THICKNESS :** 390 MM



**(HCB) 6 INCH**

**SIZE:** 150X200 MM  
**THICKNESS :** 400 MM



**(HCB) 6 INCH LINE**

**SIZE:** 150X200 MM  
**THICKNESS :** 400 MM



المملكة  
THE KINGDOM

## B. MASONRY CONCRETE BLOCKS



**(HCB) THREE QUARTER MOH**

**SIZE: 190X190 MM**  
**THICKNESS : 290 MM**



**(HCB) 8 INCH MOH**

**SIZE: 190X190 MM**  
**THICKNESS : 390 MM**



**8 INCH MOH INSULATION**

**SIZE: 190X190 MM**  
**THICKNESS : 390MM**



**(HCB) 8 INCH HALF**

**SIZE: 200X100 MM**  
**THICKNESS : 400 MM**



**(HCB) 8 INCH FAIR FACE**

**SIZE: 200X200 MM**  
**THICKNESS : 400 MM**



**8 INCH IMSI**

**SIZE: 200X200 MM**  
**THICKNESS : 400 MM**



**8 INCH INSULATION**

**SIZE: 200X200 MM**  
**THICKNESS : 400 MM**



المملكة  
THE KINGDOM

## B. MASONRY CONCRETE BLOCKS



**(HCB) 8 INCH LINE**

**SIZE:** 200X200 MM  
**THICKNESS :** 400 MM



**8 INCH SANDWICH**

**SIZE:** 200X200 MM  
**THICKNESS :** 400 MM



**8 INCH SOLID**

**SIZE:** 200X200 MM  
**THICKNESS :** 400 MM



**(HCB) 10 INCH**

**SIZE:** 200X250 MM  
**THICKNESS :** 400 MM



**(HCB) 12 INCH HCB**

**SIZE:** 200X300 MM  
**THICKNESS :** 400 MM



**12 INCH INSULATION**

**SIZE:** 200X300 MM  
**THICKNESS :** 400 MM



**12 INCH SOLID**

**SIZE:** 200X300 MM  
**THICKNESS :** 400 MM



المملكة  
THE KINGDOM

## B. MASONRY CONCRETE BLOCKS



**6 INCH SOLID**

**SIZE:** 150X200 MM  
**THICKNESS :** 400 MM



**10 INCH SOLID**

**SIZE:** 200X250 MM  
**THICKNESS :** 400 MM



**(HCB) 8 INCH**

**SIZE:** 200X200 MM  
**THICKNESS :** 400 MM



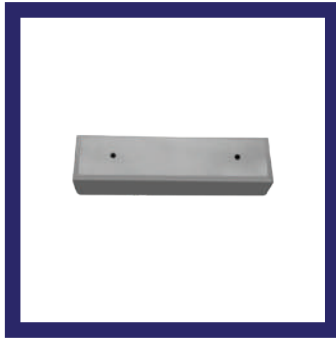
**8 INCH THERMO BLOCK**

**SIZE:** 600X200 MM  
**THICKNESS :** 200 MM



المملكة  
THE KINGDOM

## C. WHEEL STOPPER & KERBSTONE



**WHEEL STOPPER SLAB**

**SIZE:** 800X160 MM  
**THICKNESS :** 200 MM



**WHEEL STOPPER SLAB**

**SIZE:** 600X90 MM  
**THICKNESS :** 150 MM



**WHEEL STOPPER SLAB**

**SIZE:** 700X150 MM  
**THICKNESS :** 100 MM



**WHEEL STOPPER SLAB**

**SIZE:** 700X100 MM  
**THICKNESS :** 100 MM



**SMALL KERBSTONE**

**SIZE:** 125X150 MM  
**THICKNESS :** 914 MM



**MIDIUM KERBSTONE**

**SIZE:** 125X254 MM  
**THICKNESS :** 914 MM



**MIDIUM KERBSTONE FLUSHED**

**SIZE:** 125X254 MM  
**THICKNESS :** 914 MM



**BIG KERBSTONE**

**SIZE:** 150X305 MM  
**THICKNESS :** 914 MM



المملكة  
THE KINGDOM

## C. WHEEL STOPPER & KERBSTONEKERBSTONE



**FIAG STONE SLAB**

**SIZE:** 300X300 MM  
**THICKNESS :** 40 MM

**Color**



**GARDEN PAVING SLAB**

**SIZE:** 590X190 MM  
**THICKNESS :** 40 MM

**Color**



**EDGE KERBSTONE**

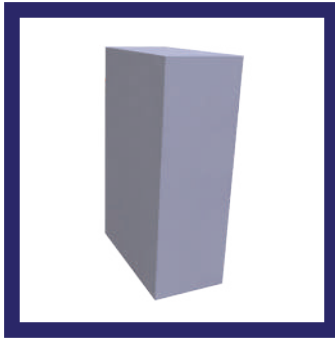
**SIZE:** 50X150 MM  
**THICKNESS :** 914 MM

**Color**



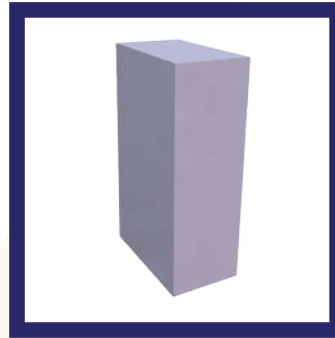
المملكة  
THE KINGDOM

## D. AERATED AUTOCLAVED BLOCKS (AAC)



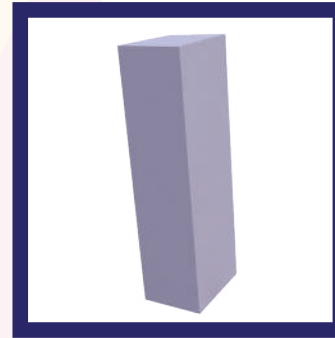
**16 INCH**

**SIZE:** 200X400 MM  
**THICKNESS :** 600 MM



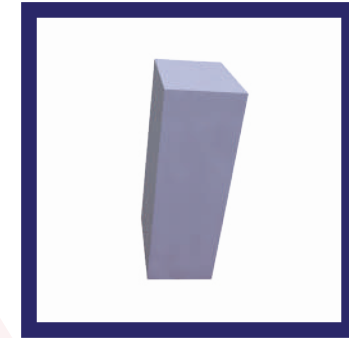
**14 INCH**

**SIZE:** 200X350 MM  
**THICKNESS :** 600 MM



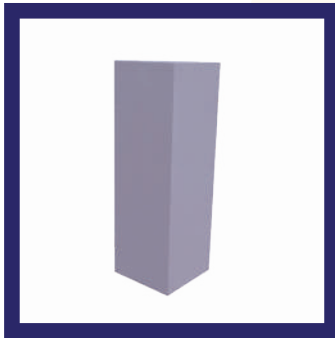
**12 INCH**

**SIZE:** 200X300 MM  
**THICKNESS :** 600MM



**10 INCH**

**SIZE:** 200X250 MM  
**THICKNESS :** 600 MM



**8 INCH**

**SIZE:** 200X200 MM  
**THICKNESS :** 600 MM



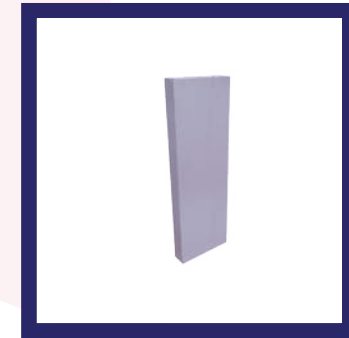
**6 INCH**

**SIZE:** 200X150 MM  
**THICKNESS :** 600 MM



**4 INCH**

**SIZE:** 200X100 MM  
**THICKNESS :** 600 MM



**2 INCH**

**SIZE:** 200X50 MM  
**THICKNESS :** 600 MM

**KINGDOM GROUP OF COMPANIES  
P.O. BOX 1169  
MANAMA KINGDOM OF BAHRAIN**



المملكة  
THE KINGDOM

**SALESMAN**

**ALI AYOUB 36260055**

**MAINE OFFICE NO: 13666333**

**DISPATCH OFFICE NO: 36260116 - 13606319**

**EMAIL: SALES@KINGDOM.BH**



**Visit Our Website**  
[www.kingdom.bh](http://www.kingdom.bh)



**Visit Our Instagram**  
[kingdomgroup.co](https://www.instagram.com/kingdomgroup.co)